



LICENSING EXECUTIVES SOCIETY  
INTERNATIONAL

Connecting Licensing Professionals Around The World



[www.lesi.org](http://www.lesi.org)



LICENSING EXECUTIVES SOCIETY  
INTERNATIONAL

# Connecting Licensing Professionals Around The World



# WHAT IS LES ?

A premier global business association for licensing whose members, as individuals worldwide, are actively involved in business activities concerned with transfer of technology and intellectual property rights.



# MISSION OF LES

To function as a non-profit professional organization to broadly support LES Societies in their efforts on behalf of individual members by:

- Setting and promoting of consistent, high professional standards for licensing executives on a global basis;
- Creating and maintaining various geographically based LES Societies with the necessary quantity and balance of local members;
- Providing organizational leadership, coordination and advice;



- Facilitating professional networking between the members of LES Societies;
- Providing quality educational content to, and facilitating the sharing of educational content between, LES Societies;
- To inform and interact with global organizations and policy forums concerning the economic significance and importance of licensing and other transfer of technology and intellectual property rights.



# FACTS

- An association of individual societies cooperating under one umbrella.
- The first society (LES USA) was founded in 1965.
- The latest society (LES Chinese Taipei) was founded in 2005.



- 31 Member Societies
- > 85 Countries represented
- > 12.000 Individual Members
  - Worldwide



# Who are members of LES

- Managing Directors
- Company Executives
- Small Business Entrepreneurs
  - University Licensors
- Campus Company Managers
  - Venture Capitalists
  - Inventors





- Accountants
  - Scientists and Engineers
    - Lawyers
- Patent and Trademark Attorneys
  - Academics
- Government Representatives
  - Technology Brokers
    - Consultants



# Benefits of membership

- Networking
- Business Opportunities
  - Educational
- Common Issues / Experience



# Fields of interest

- Licensing and Transfer of Technology
  - Technology Development
- Protecting Intellectual Property
- Valuing Intellectual Property



- IT and E-Commerce developments
  - Copyright Licensing
  - Trademark Merchandising
  - Franchising and Distribution



# PRODUCTS

- Quarterly Journal - *les Nouvelles*
- International Membership Directory
  - LESI Annual Report (website)
    - Web sites
- Publications and educational material
  - Newsletters



# CONFERENCES

- National
- Regional (e.g. Pan-European, Asia)
  - International
- Licensing Courses
- Special Interest seminars/workshops

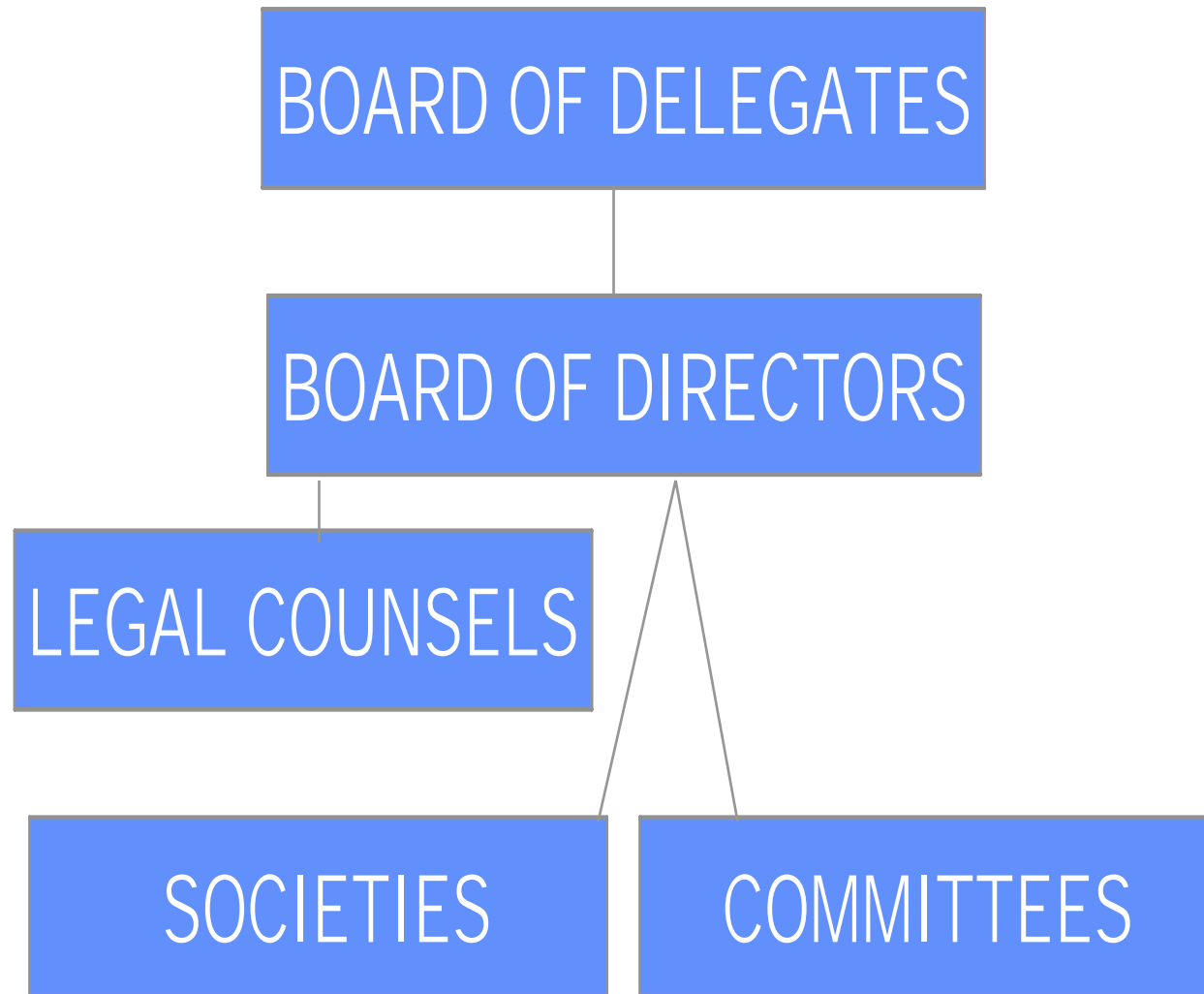


# **INTERNATIONAL CONFERENCES**

- **LESI Conference 2007 – Zurich**
- **LESI Conference 2008 – Chicago**
- **Pan-European Conference 2008 –  
Amsterdam or Antwerp**
- **LESI Conference 2009 – Manilla**
- **Pan-European Conference 2009 –  
Stockholm or Copenhagen**



# STRUCTURE LESI







# Board of Directors 2006-2007

President	Ron Grudziecki (LES USA/Canada)
Past President	Peter Chrocziel (LES Germany)
President Elect	Chikao Fukuda (LES Japan)
Secretary	Adam Liberman (LES ANZ)
Treasurer	Pat O'Reilley (LES USA/Canada)
Vice Presidents	Stephen Powell (LES Britain & Ireland) Alan Lewis (LES South Africa) Ernesto Cavalier (LES Andean Community)
Counselors	Philip Dreier (LES Switzerland) Alan Gordon (LES USA/Canada)



# LESI Working Groups

- ◆ Automotives
- ◆ Chemical, Energy and Environment
- ◆ Copyright Licensing
- ◆ Dispute Resolution
- ◆ European



# LESI Working Groups

- ◆ Industry - University Transactions
- ◆ IT and E-commerce
- ◆ Life Sciences
- ◆ Pan-American
- ◆ Pan-Asian
- ◆ Patent and Technology Licensing
- ◆ Trademark and Character Licensing

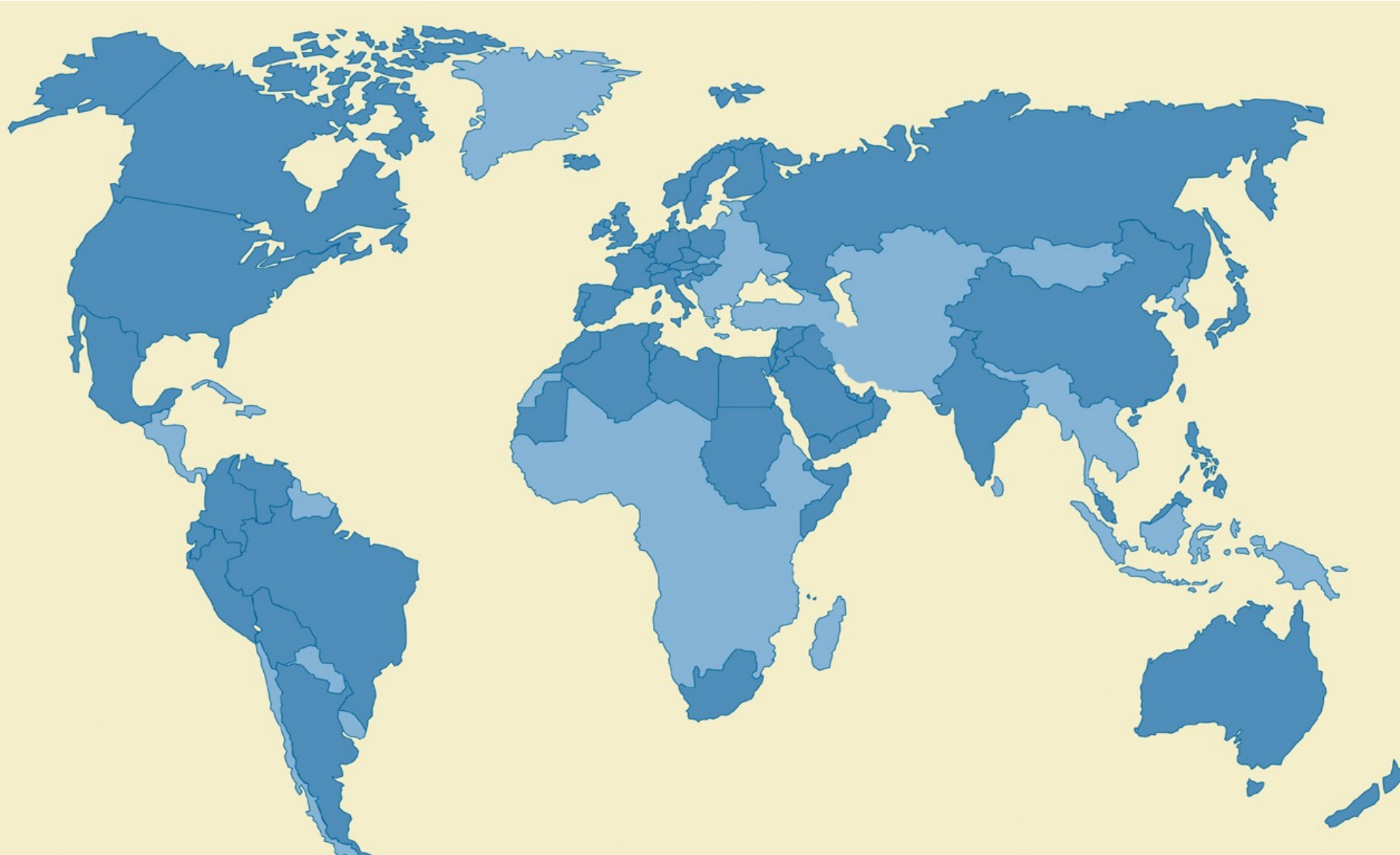


# LESI Operating Committees

- Auditors
- Awards
- Communications
- Endowment
- Education
- Investment
- IP Maintenance
- Legal
- LESI External Relations
- Long Range Planning
- Meetings
- Membership
- Nominating



# LESI World Map





# **LES in NORTH AMERICA**

- Mexico
- USA and Canada

# **LES in SOUTH AMERICA**

- Andean Community
  - Argentina
  - Brazil



# LES in EUROPE

- Austria
- Benelux
- Britain and Ireland
- Croatia
- Czech Republic
- France
- Spain and Portugal
- Germany
- Hungary
- Italy
- Poland
- Russia
- Scandinavia
- Switzerland



# **LES in the MIDDLE EAST**

- Arab Countries
- Israel

# **LES in AFRICA**

- South Africa





# LES in ASIA and the PACIFIC

- Australia and New Zealand
  - China
- Chinese Taipei
  - India
  - Japan
  - Korea
- Malaysia
- Philippines
- Singapore



**LES - is there for you !**

for more information

[www.lesi.org](http://www.lesi.org)

or

[info@lesi.org](mailto:info@lesi.org)